

January 22, 2026

Fermilab FY25 PEMP

Greg Stephens
COO



U.S. DEPARTMENT
of **ENERGY**

Fermi National Accelerator Laboratory is managed by
FermiForward for the U.S. Department of Energy Office of Science



Areas of Excellence

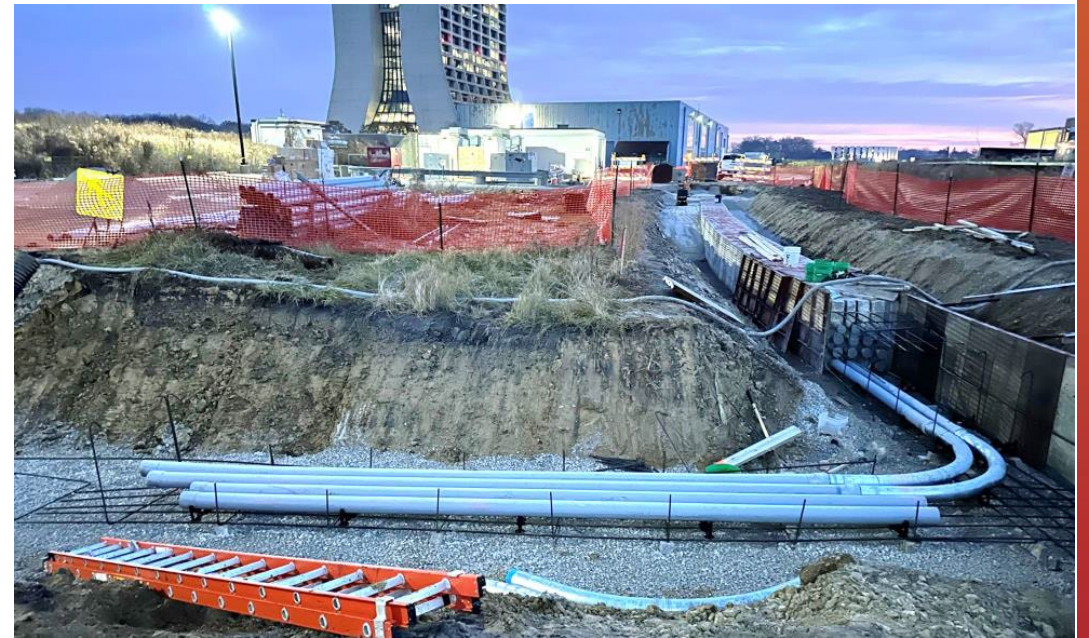
Noted in the report: the laboratory has continued to maintain a strong scientific vision and productive relationships within the scientific community.

Examples of some specific call-outs:

- Delivered groundbreaking results in particle physics, quantum science and detector R&D, including final Muon g-2 results and impactful SQMS publications.
- Successfully managed critical projects like LBNF/DUNE, PIP-II, HL-LHC AUP and LCLS-II-HE, which made important progress and reached critical milestones.
- Accelerator Complex delivered record protons to the Booster Neutrino Beam target with more than 80% uptime.
- Recognized for mentoring programs like Workforce Development for Teachers and Scientists.
- Successfully engaged local communities through programs like the Saturday Morning Quantum program in South Chicago and partnerships with community colleges.
- In Technology Transfer, increased CRADAs and SPPs, growing partnerships with government agencies and industry partners from \$2.5M in FY24 to \$15M in FY25.

Areas of Continued Focus

- Business system improvements
- Execution of near-term priorities
- Laboratory infrastructure upgrades





Fermilab Report Card Comparison 2024-2025

Green indicates improvement

| | 2024 | 2025 |
|--|------|-----------|
| Mission Accomplishments (Quality and Productivity of R&D) | A- | B+ |
| Construction and Operation of Research and Facilities | B+ | B |
| S&T Project/Program Management | C+ | <i>B</i> |
| Contractor Leadership/Stewardship | C+ | <i>B</i> |
| Environment, Safety and Health | B- | <i>B+</i> |
| Business Systems | C | <i>B</i> |
| Facilities Maintenance and Infrastructure | B | B |
| Security and Emergency Management | B+ | <i>A-</i> |

Thank you!



U.S. DEPARTMENT
of **ENERGY**

Fermi National Accelerator Laboratory is managed by
FermiForward for the U.S. Department of Energy Office of Science