



Security & Emergency Management Services (SEMD)

Community Advisory Board Presentation

March 27, 2025

Agenda

- Security and Emergency Management Division (SEMD)
 - Fire Department/EMS
 - Emergency Management
- Defining an emergency
- Emergency readiness/preparedness

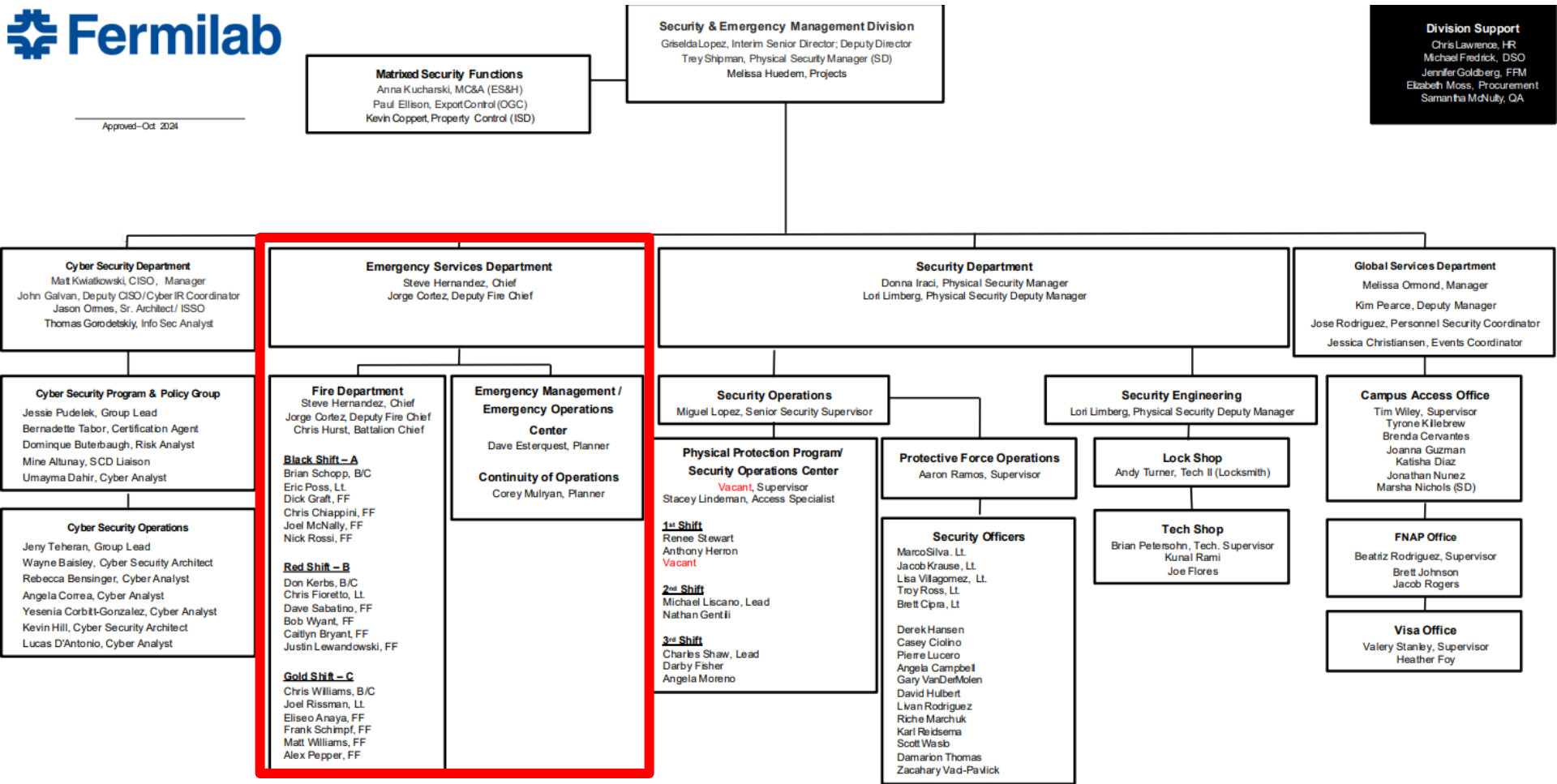
Security & Emergency Management Division

- The Fermilab Security and Emergency Management Division (SEMD)'s mission is dedicated to upholding labwide security and ensure adherence to operational requirements to continue to drive scientific discovery and support the Fermilab mission.
- The SEMD consists of Emergency Management, Fire Department/EMS, Physical Security, Cybersecurity and Global Services.
- The Division is also supported by the SEMD Projects Office and collaborates with Counterintelligence.

Emergency Services org chart



Approved-Oct. 2024



SEMD

Fire Department & Emergency Management

- The Fermilab Fire Department specializes in fire protection, emergency response and life safety services. Their role extends beyond reactive measures. They are located on site and operate 24/365, providing essential emergency services to Fermilab. Employs 21 personnel including 18 firefighters.
- The Emergency Management Team proactively works to keep the lab safe by developing comprehensive plans and procedures that encompass all types of potential emergency scenarios. During and after emergencies, the team spearheads the response efforts, partners with various areas, and ensures overall safety of the Fermilab community.

FFD management team



Fire Chief / Emergency Services Head
Steve Hernandez



Deputy Chief
Jorge Cortez



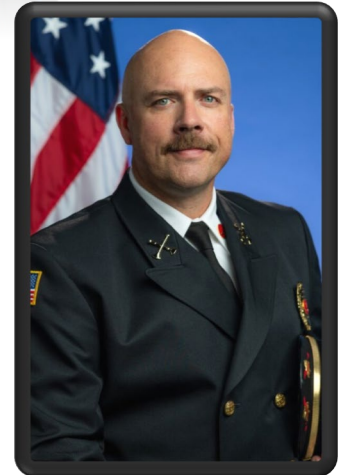
Battalion Chief
Brian Schopp



Battalion Chief
Don Kerbs



Battalion Chief
Chris Williams



Battalion Chief
Chris Hurst

FFD partnerships and resources

- Fermilab is an active member of MABAS Division 13 and Division 16 in Kane and DuPage counties.
- FFD engages in training and Auto-Aid Response agreements with Batavia, Warrenville, North Aurora and West Chicago Fire Departments.
- At the end of calendar year 2022, FFD established a collaboration with the Argonne Fire Department and both entities have become part of Division 16.



FFD role: Beyond reactive measures

Prescribed burning

- Burning is essential for maintaining tallgrass prairie, oak savanna and many other habitat community types in the Midwest.
- FFD coordinates with the lab's Roads & Grounds team, Illinois EPA and DOE on prescribed burns.



Emergency management program

- Responsible for developing an integrated and comprehensive emergency management program to ensure that Fermilab can prepare for, respond to and recover from various emergencies.
- Ensure that Fermilab has the plans, procedures, protocols and policies to support the emergency management program.
- Collaborate with internal and external stakeholders to plan, prepare and test emergency preparedness plans.



***David Esterquest BSN, MPH
Emergency Management
Planner***



***Corey Mulryan
Emergency Management
Planner***

Emergency management program

Oversight of emergency management programs:

- Comprehensive Emergency Management Plan (CEMP)
- Continuity of Operations (COOP)
- Developing emergency management plans
- Conducting emergency preparedness drills and exercises (fire and tornado evacuation drills)
- Planning and collaboration with external stakeholders:
 - Law enforcement, Fire/EMS/EMS at the community/county and federal level(s)
 - Healthcare agencies (hospitals) and county emergency management/public health
- Collaborating with DOE science lab counterparts

What is an emergency?

- **Definition:** Any incident -- whether natural, human-caused or technological -- that could endanger or adversely affect people, property, or the environment, and may require responsive action.
- **Emergency types at Fermilab:** Natural, human-caused and technology.
 - Failures in infrastructure (water leak, natural gas leak, power failure, landline phones, etc.)



Natural emergencies include pandemic, earthquakes, tornado, temperature extremes (cold/heat), floods and fires.



Human-caused emergencies include fires, hazardous materials spill, bomb threat, transportation accidents, active threat/shooter and medical emergency.



Technology emergencies include cyber-attack.

Emergency readiness/preparedness

Training for all badged lab personnel

- Emergency Preparedness Awareness Training (annual)
 - Roles/responsibilities to recognize local alarms, emergency actions
- Workplace Violence, Active Shooter/Active Threat Training
 - Run, Hide, Fight

Exercises/Drills

- Fire, tornado evacuation and sheltering
- Local hazards (building specific)
- Active Threat

Emergency communications/mass notification

- Everbridge system mass notification, capable of contacting lab personnel via email/phone/text

Questions?