



## Improvements to Fermilab Site Access

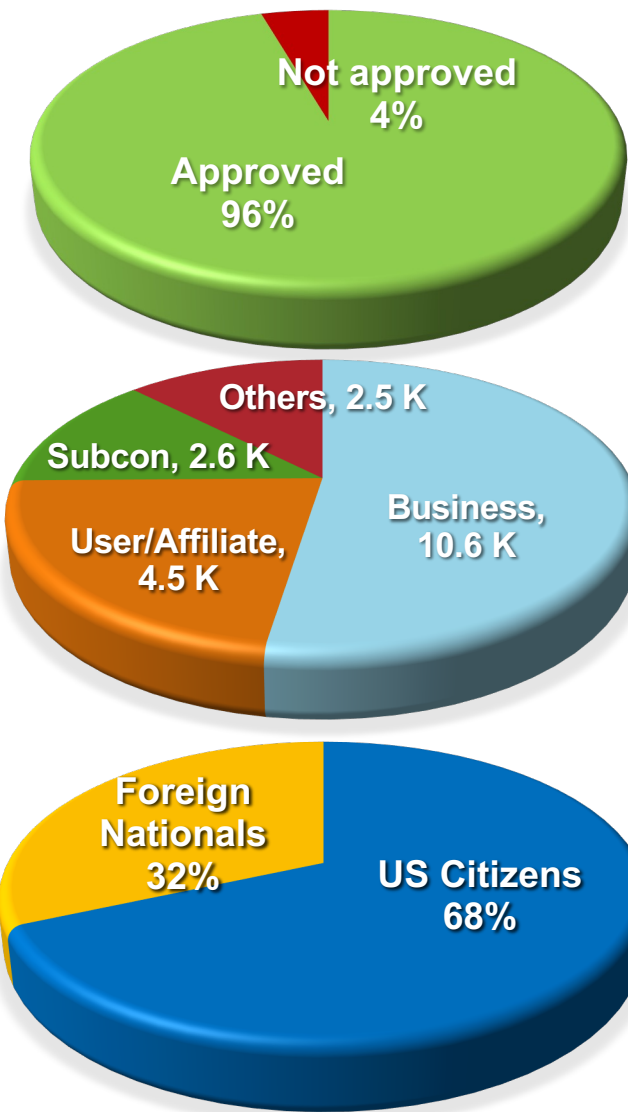
D. Glenzinski (on behalf of the Site Access Steering Committee)

23 May 2024



# Site Access – By the Numbers

20.2K REQUESTS (12 MONTHS)



More than 6,500 Public visitors to the site in 2023: Wilson Hall, Lederman Science Center, prairie hiking trails, bike access, bison viewing



# Site Access Steering Committee (SASC) Progress: Oct-Feb

Oct-Nov 2023	Dec 2023	Jan-Feb 2024	Mar-Apr 2024
<ul style="list-style-type: none"><li>• Worked with DOE on a Site Access Assist Review</li><li>• Steering Committee formed</li><li>★ Initiated improved outreach and communications (meetings, website, all hands messaging)</li><li>• Benchmarked with four peer laboratories</li></ul>	<ul style="list-style-type: none"><li>• Reviewed &gt;500 suggestions &amp; comments from staff, users, affiliates, &amp; community and categorized this feedback to formulate a set of end-state goals</li><li>• Launched SASC Web page and mailbox</li><li>★ Expanded access to additional buildings for badged staff</li><li>• Completed Wilson Hall Access Control project</li><li>• Implemented Single-Form and Invitation access request processes</li></ul>	<ul style="list-style-type: none"><li>★ Opening of Aspen East Welcome &amp; Access Center, and clarification of REAL ID alternatives</li><li>• Developed site access data dashboard for metrics</li><li>★ Re-opened portions of WH to the public</li><li>★ Brought Access Control Gates into operation</li><li>• Proposed changes to requirements based on feedback from DOE Assist and benchmark exercise</li></ul>	<ul style="list-style-type: none"><li>• With DOE Site Office developed agreed upon implementation plan for:</li><li>★ Changes to security area designations</li><li>• Improvements to foreign national access requests</li><li>★ Clarification and expansion of access times &amp; locations</li><li>★ Streamlining of special event security plans</li></ul>



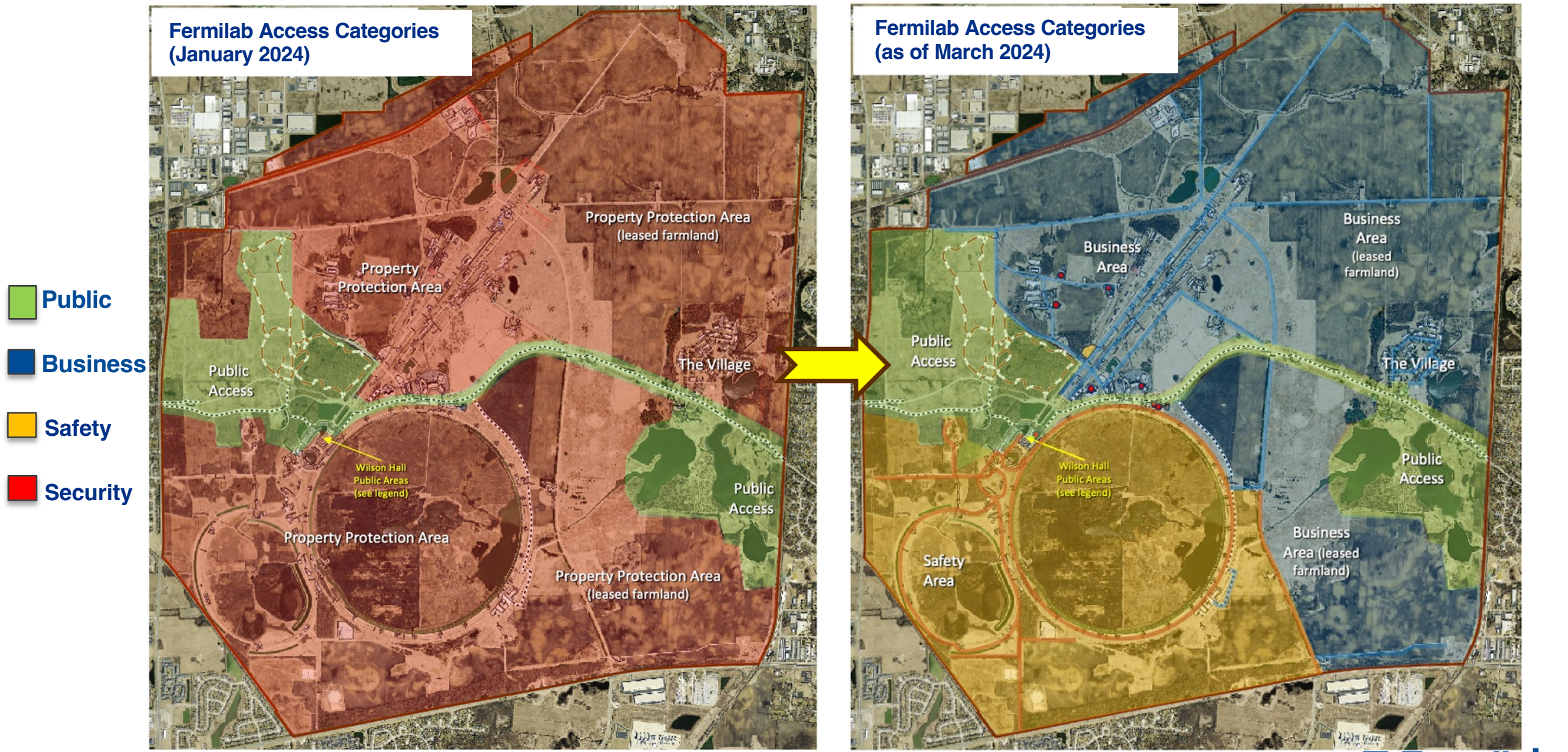
# Welcoming the Public to Wilson Hall in January



Over 200 participants!



# Designation of Public, Business, Security & Safety Areas





# Some Improvements for Public Visitors

**Lab supported access to more than 6.5k public visitors in 2023!**

**Lab has worked to improve access to the site and improve the community experience:**

- REAL ID compliance required for access to the site
  - Assistance at Aspen East Welcome & Access Center (Batavia Gate)
- Public tours of the lab are available for sign-up via Education and Public Engagement Office web site
- New system being implemented in June using smart phone scanning technology to streamline public access at the gates – no need for red temporary stickers
- Future: Fermilab Welcome and Access Center @ Kirk & Pine in 2025



## Public Access Hours

Wilson Hall\*: Mon-Fri, 7 am -5 pm

Lederman Science Center\*:

Mon-Fri, 9 am -5 pm; Sat 9 am -3 pm

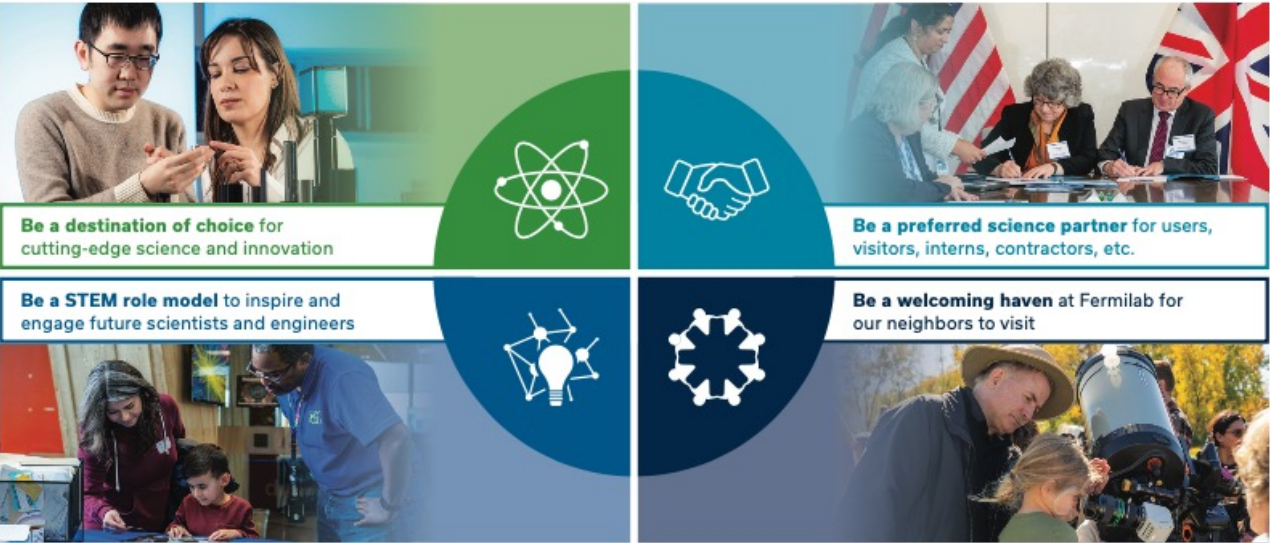
Grounds: dawn-to-dusk daily

\* Excluding lab holidays

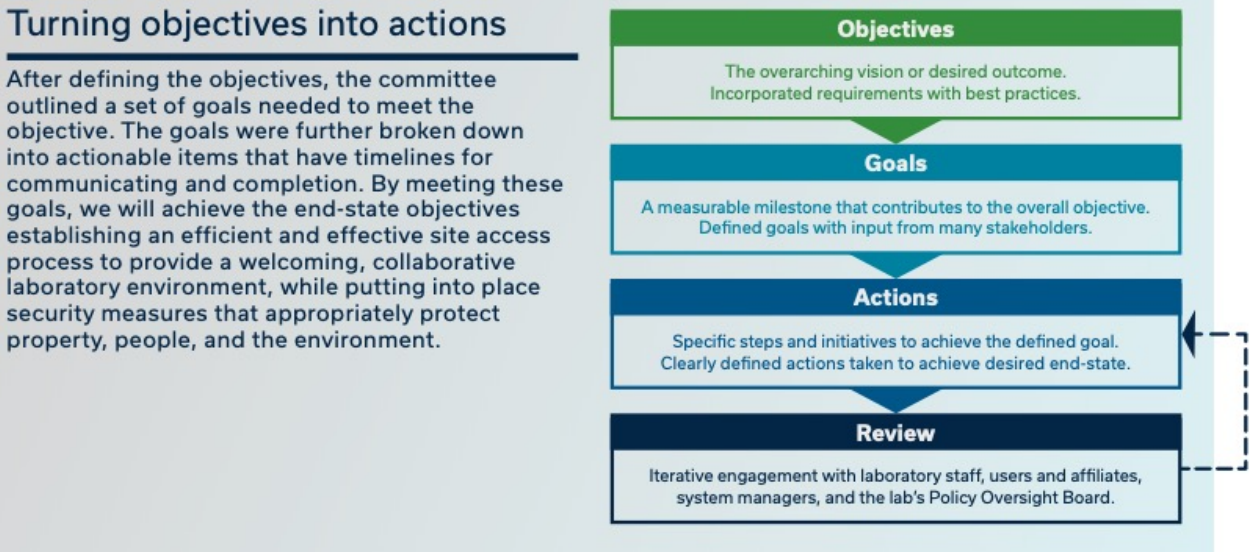
# Future State Process & Results

- Ensured compliance by utilizing feedback from DOE Assist Visit and results from Benchmark exercise to identify updates to site security and and access policies
- Ensured responsiveness to community stakeholders by collecting feedback from staff, users, international & business partners, public, etc.
  - Analyzed these sources to identify a set of desired outcomes responsive to the concerns expressed (read through 100s of comments and suggestions)

## Organized to support laboratory objectives



## Each Objective has contributing Goals and Actions



## Summary and Next Steps

- Working with the DOE Site Office, the lab has made substantive progress to improve site access and the associated communications with all stakeholders.
- A prioritized work plan has been developed to continue progress and to evaluate further improvements for a future-state responsive to stakeholders and compliant with DOE requirements.
- Recent progress is helping to reduce stakeholder frustration. Ongoing, timely and consistent communications are required to continue making progress.



We look forward to  
continuing to welcome our  
neighbors visiting the lab!





# Thank you!