



# Fermilab site access: Now and in the future

Community Advisory Board Presentation

May 25, 2023





Fermilab continues to be a welcoming community while still keeping everyone safe



# What is there to protect?

## Considerations specific to Fermilab



- ❑ First and foremost, our people (employees and visitors!)
  - Fermilab **operates the largest accelerator complex in the U.S.**
    - There are hazardous sources of energy associated with this operation
    - Fermilab employees undergo safety training. The public does not
- ❑ Our **assets, physical and intellectual**
  - Fermilab has **extensive assets** (*\$3B replacement plant value and \$250M in active personal property assets*)
  - Fermilab develops **sensitive technologies**
  - Fermilab also manages a large amount of **non-public information**
    - Cyber-attacks on Fermilab have grown - 10 million intrusion *attempts* recorded in the last six months

**The lab must stay in compliance with federal regulations and DOE requirements**

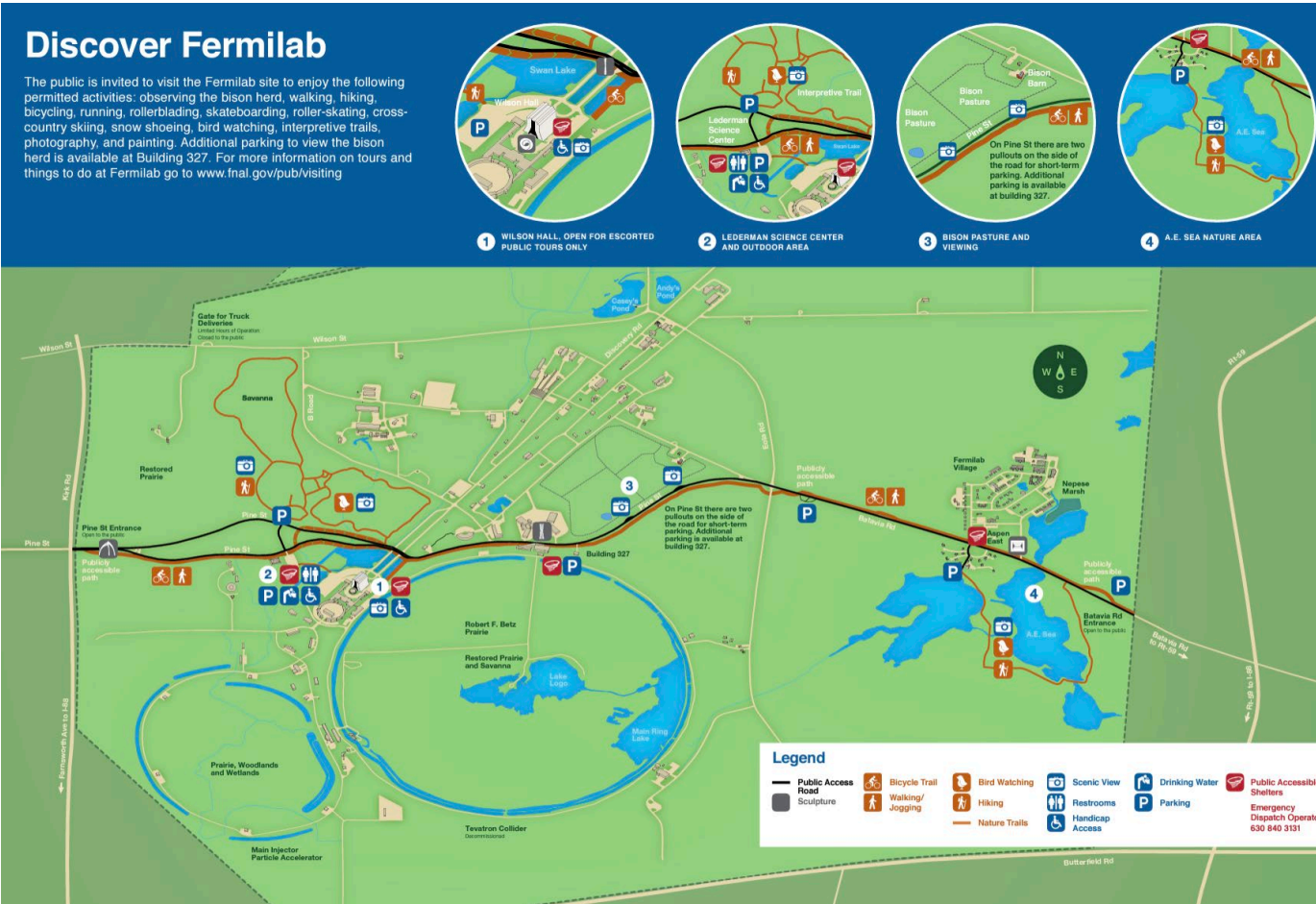
# Balancing our open, welcoming culture with safety and security

- ❑ New safety and security requirements mean we need to reset expectations and establish new policies regarding site access
  - We are drawing on the experience of other labs and working with the DOE and our task force on making the visitor experience more efficient
- ❑ We are taking a phased approach to reopening, starting now through early 2025





# What's open to the public now?



With Real ID-compliant identification, Fermilab visitors can access:

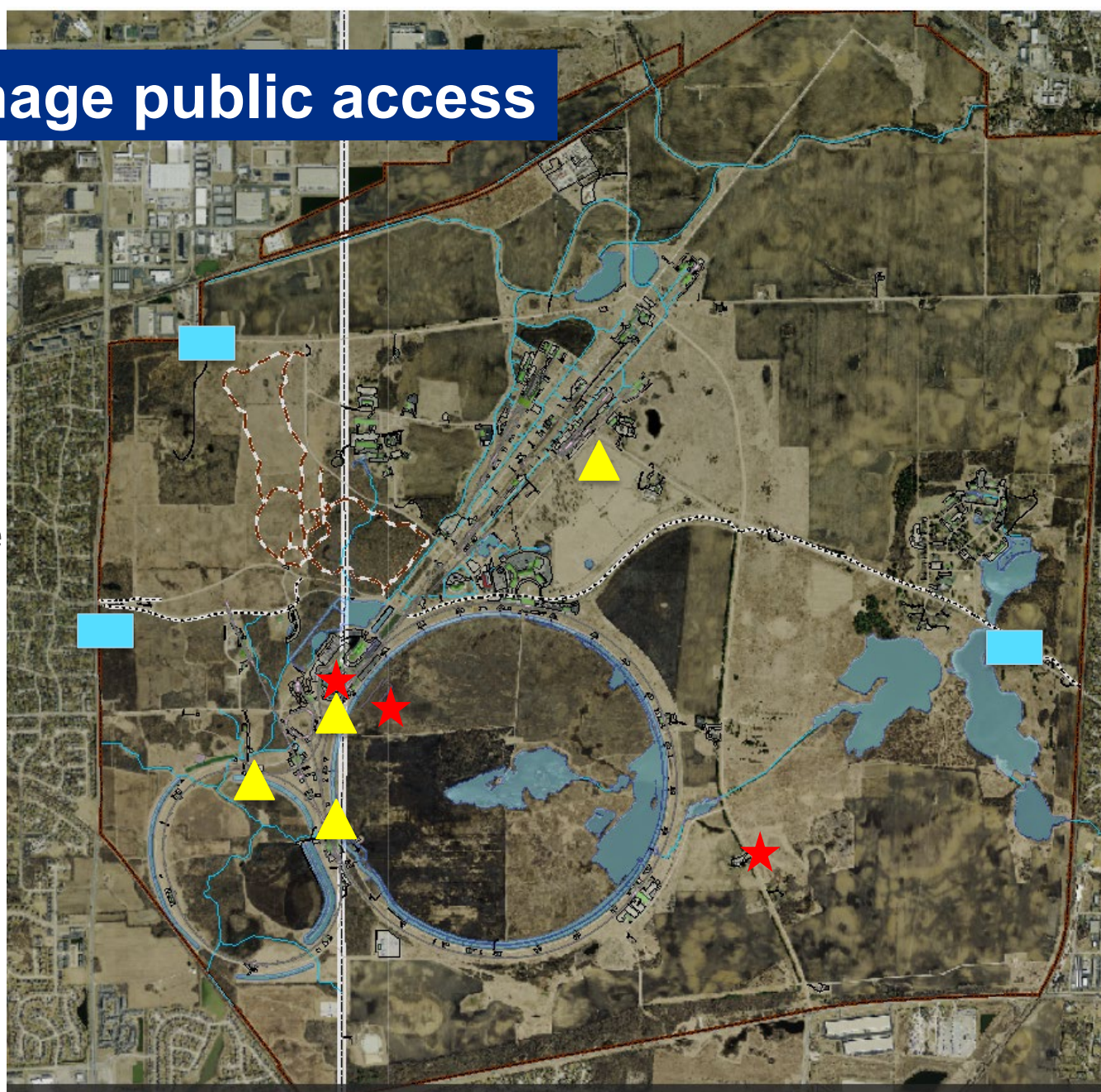
- Batavia Rd. & Pine St. Gates
- Bison-viewing area
- Restored prairie trails
- Bicycling and walking trails
- On-leash dog walking
- Lederman Science Center
- Saturday Morning Physics and other STEM activities in the Ramsey Auditorium
- SAGE summer camp (HS girls)
- Field trips
- MakerSpace programming: STEM spotlight





# The plan to manage public access

- ❑ **Gates**: control vehicle access to main accelerator campus
- ❑ **Signage** at entrance gates and local postings
- ❑ **Fences** at West Booster Lawn, AP-0, MI-12, to control worker doses, and NM4/Spin Quest



Fences are 4-foot high, chain link, designed to keep personnel from wandering into areas with possible exposure to non-zero above background radiation

- ★ = new gate arm
- ▲ = new fencing
- = new signs

# Fermilab access requirements

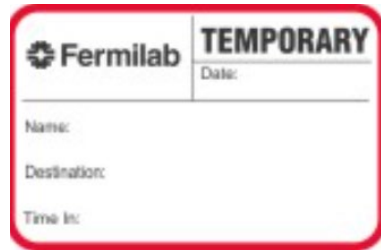
REAL-ID compliant identification is required to enter the Fermilab site as of May 3, 2023



REAL ID  
Gold Star  
Designation

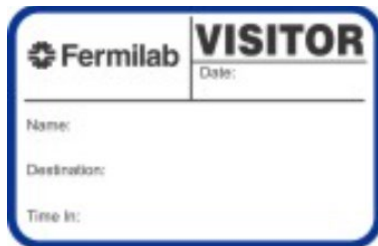
- Employees, users, affiliates and visitors are required to follow standard site access processes to obtain badging for lab entry
- We are working to streamline processes for badging and improve systems for research collaborators, users and business visitors
  - Coming soon:** Single-entry form to request site access
- We have an [FAQ](#) on Fermilab's website to answer questions about access

# Temporary Badges



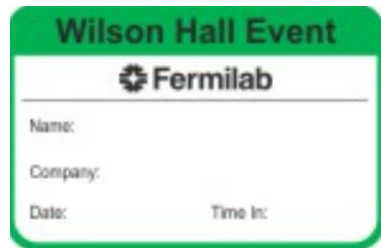
## Red is for the general public

With the exception of underage participants on scheduled school tours.



## Blue is for Business Visitors

Blue is for those that have had their identity verified, but do not have a Fermilab badge for an acceptable reason. Individuals who are at Fermilab for more than 1 day will be emailed a QR Code that the Security Officers will be able to scan at the control posts.



## Green is for Business Visitors attending events only in Wilson Hall

Green is for those that have had their identity verified and are attending a Wilson Hall event during workdays/dawn to dusk hours. Individuals that have completed the registering process and have been approved will be emailed a QR Code that the Security Officers will be able to scan at the control posts. This does not include events that are open to the public or minors.



## Fermilab Welcome & Access Center (FWAC)

# *Arriving in 2025!*

### New main entrance access

- The new center will provide business visitors and the public with a welcoming entrance to Fermilab
- A smoother administrative process
- Public visitors can obtain visitor passes to visit the public areas of the campus
- New employees and subcontractors will have a more efficient badging experience
- The center will provide a place for business visitors to complete any required access forms
- We expect construction to start this fall or in 2024



# Fermilab will be communicating frequently about access



Visitors and the public are welcome to come to the lab campus to walk, bike, walk leashed dogs, see the bison or tour the Lederman Science Center with proper identification.

Photo: Fermilab

**We recognize changes can be confusing and frustrating – we are committed to doing a better job communicating about site access regularly**

- For the public:** Fermilab Frontier newsletters, website updates, Community Advisory Board Updates
- For employees, users and affiliates:** All-hands meetings, news@work, FAQs, manager and supervisor updates, responses to [staffquestions@fnal.gov](mailto:staffquestions@fnal.gov)
- For additional information:** Contact Deb Sebastian, Interim Senior Director, Communication Division & Internal Communications Manager at [staffquestions@fnal.gov](mailto:staffquestions@fnal.gov)



# Anticipated site access timeline now through early 2025

Timeline	Improve access for	Action
Now through end of 2023	Employees, users, affiliates, business visitors, emergency vehicles, delivery trucks	Streamline badging process (single form), intercom systems, gates, fences
2024	Community, educators	Expanding Wilson Hall access; ramping up community outreach (public tours, etc.)
Late 2024 to early 2025	All	Welcome & Access Center

# What is our vision for the future?

## Balance openness with safety & security

- New processes & new safety & security systems
- New Welcome & Access Center
- Enhanced & more frequent communication

We value your role as a CAB member and in the community!

*What leaders and community members can you recommend we meet with?*