



# PIP-II Conventional Facilities Overview

S. Dixon, L2 Manager  
Community Advisory Board  
March 25, 2021

A Partnership of:

US/DOE

India/DAE

Italy/INFN

UK/UKRI-STFC

France/CEA, CNRS/IN2P3

Poland/WUST



# Agenda

- Design Concept
- Implementation
- What's Next

# Bird's Eye



2019 Rendering

# Bird's Eye - Buildings



Cryogenic Plant Building  
(under construction)

Linac Complex

2019 Rendering

# Design Basis – Fermilab History

**Wilson Hall**  
1971-73



**The Pagoda: Proton Control Center**  
December 1988



**Feynman Computing Center**  
February 1976



**Illinois Accelerator Research Center**  
February 2011



**Neutrino Dome**  
February - 1972



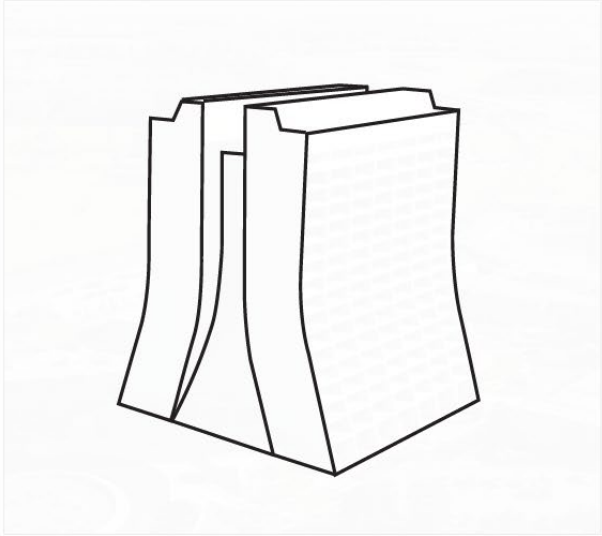
**Meson Lab**  
November 1972



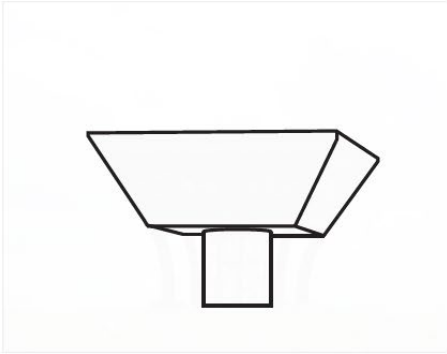
**Fermilab Cryomodule Test Facility**

# Design Basis – Strong Simple Geometry

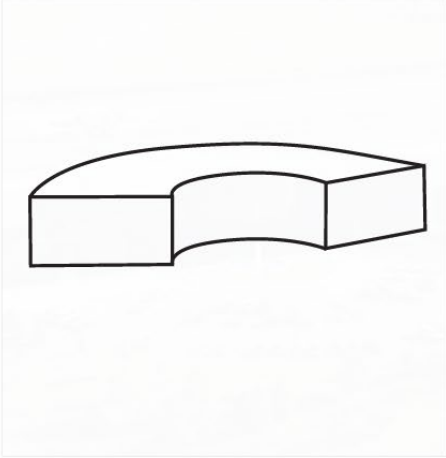
**Wilson Hall**  
1971-73



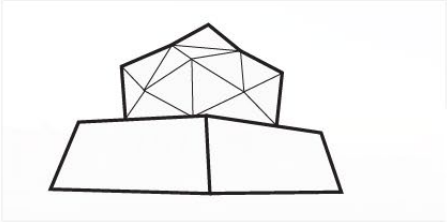
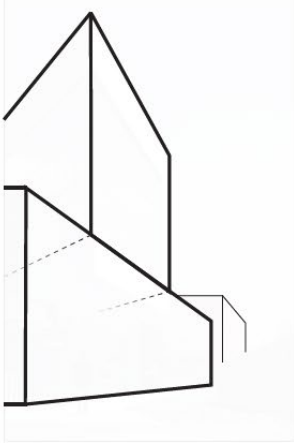
**The Pagoda: Proton Control Center**  
December 1988



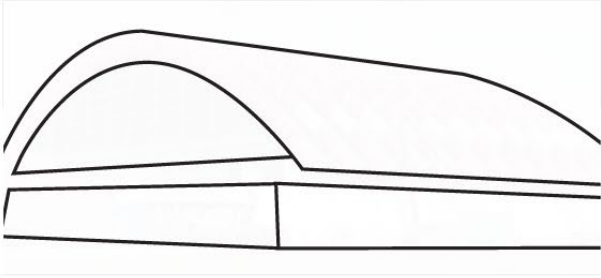
**Feynman Computing Center**  
February 1976



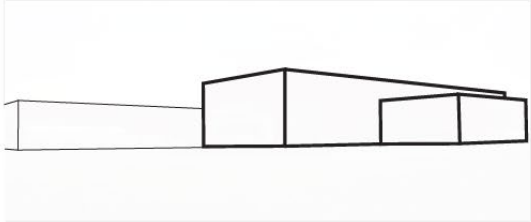
**Illinois Accelerator Research Center**  
February 2011



**Neutrino Dome**  
February - 1972



**Meson Lab**  
November 1972



**Fermilab Cryomodule Test Facility**



# Design Basis – Simple Materials

Board Form -  
Precast Concrete



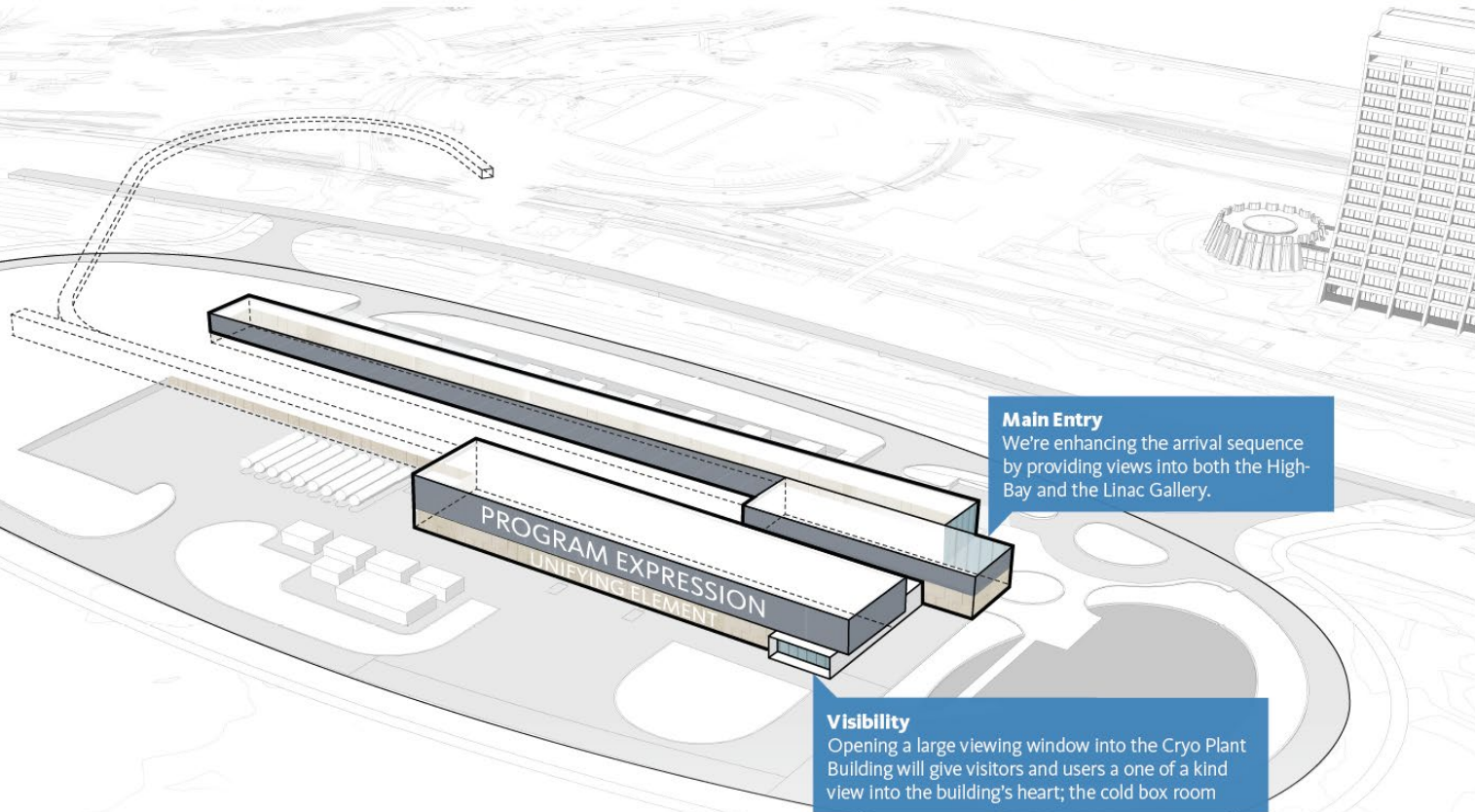
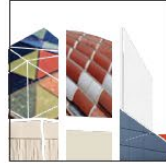
Metal Panel



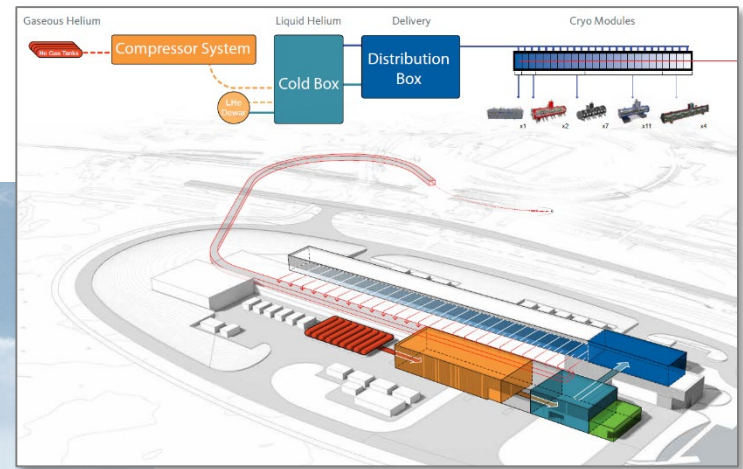
Glass



Program Expression



# Design Basis - Program





# Cryogenic Plant Building



# Cryogenic Plant Building Construction

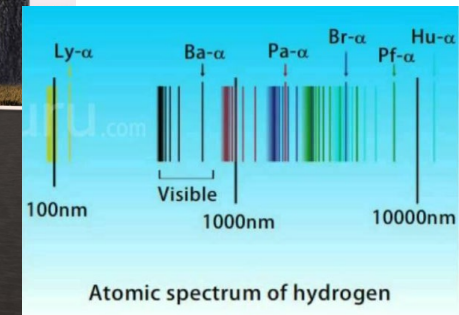
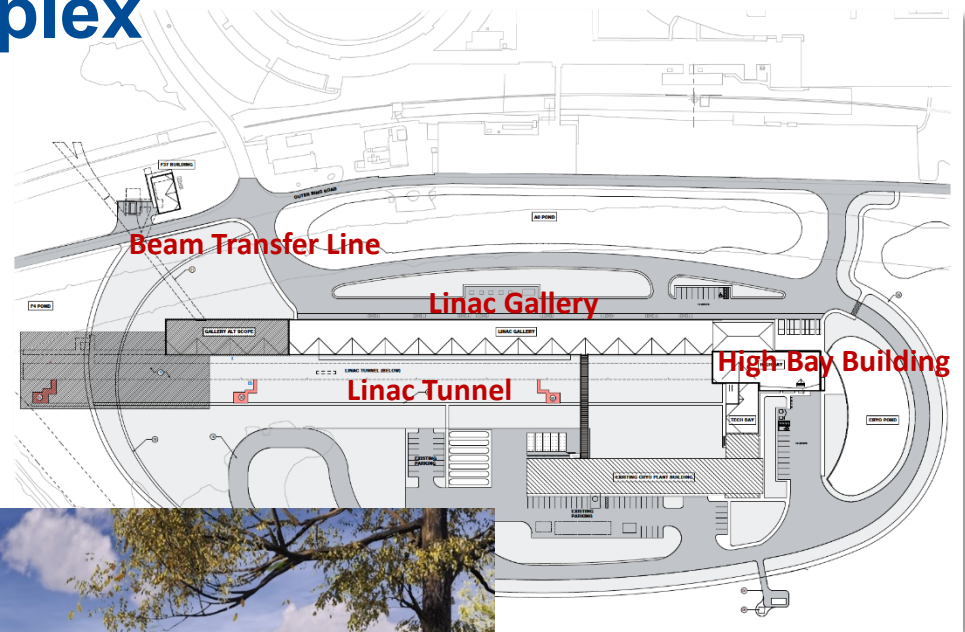


Time Lapse Link: <https://app.truelook.com/?m=16002500832205566804185>

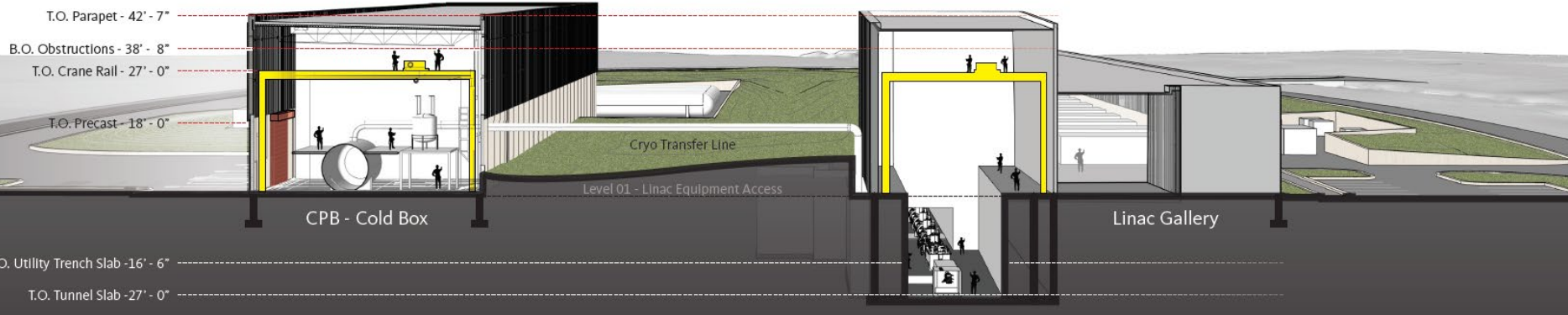


# What's Next: Linac Complex

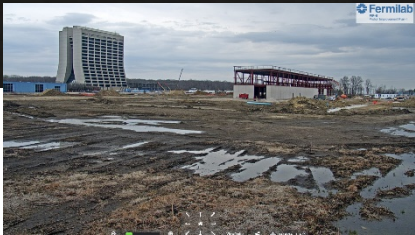
- Linac Complex includes:
  - High Bay Building
  - Linac Tunnel
  - Linac Gallery
  - Beam Transfer Line



# What's Next: Linac Complex



# Questions?



Wilson Hall Webcam: <https://app.truelook.com/?u=fc1599677013>

Main Ring Webcam: <https://app.truelook.com/?u=fc1599741050>

